

3914 Medium End Suction Centrifugal Pumps

Frame Mounted Pumps with Mechanical Seal

These pumps were designed to provide an economical pumping unit with the use of standard mechanical seals. Rugged mechanical features assure longer service eliminating the need for lubrication or maintenance.

Mechanical Shaft Seal - High quality Buna/Carbon/Ceramic seal eliminates leakage and shaft wear - requires no adjustment. Optional Viton fitted seals are available for higher temperature applications.

Compact Design - Permits installation where space is limited or not readily accessible.

Shaft - Precision ground stainless steel shaft resists corrosion - improves seal life.

Ball Thrust and Radial Bearings - Double sealed for protection from dirt and moisture; Lubricated-for-life bearings require no attention.

Casing - Back pull-out design permits servicing pump without disturbing piping connections.

Impeller - Open type impeller is screwed on the shaft and locked with stainless steel lock nut.

Rotation - Clockwise (right-hand) is standard when viewed from driving end.

Booster Service - Pumps are suitable for booster service with suction pressure up to 25 psig.

**Capacities to 95 GPM
Heads to 160 Feet
All Iron or Bronze Fitted**

FEATURES:

- Mechanical Seal
- Stainless Steel Shaft
- Two Double-Sealed Ball Bearings
- Maintenance-Free Operation
- Removable Open Impeller

SERVICES:

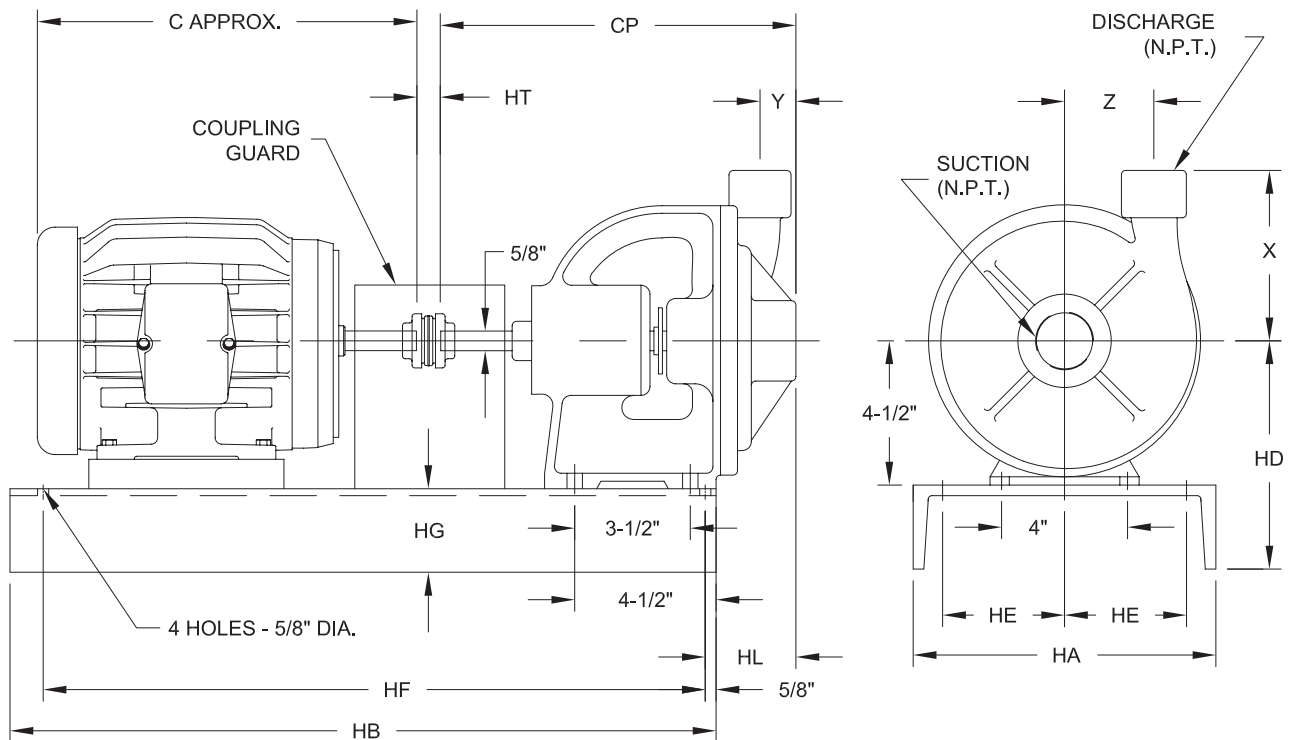
- Air Conditioning
- Cooling
- Circulating
- Degreasing
- Fountain Display
- Fuel Transfer
- Metal Cleaning
- Spraying
- Washing

Pump Speed	1750 RPM		3500 RPM	
Pump Size	1	1A	1	1A
Standard Diameter Impeller	5"	6"	5"	6"
Motor HP	1/3	1/2	2	3
Capacity GPM	Total Head in Feet			
15	26	38	-	-
25	23	35	107	-
40	* 17	* 28	99	143
60	-	-	83	* 129
80	-	-	-	* 106
100	-	-	-	-

Intermediate ratings can be obtained with smaller motor by using cut diameter impeller or varying speed of pump. With totally enclosed motor, ratings shown with asterisks may require next larger motor. Refer to performance curves for accurate selection.



Deming 3914 Series



Pump Dimensions in Inches

Size	Suction	Discharge	Max. Dia. Impeller	X	Y	Z	CP	HL
1	1¼	1	5	5¼	1½	2½	11 ¹ / ₁₆	3
1A	1½	1	6	5½	1¼	2¾	11 ⁵ / ₁₆	3¼

Base Dimensions in Inches

Motor Frame	HA	HB	C	HD	HE	HF	HG	HT
56	8	22	13 ¹¹ / ₁₆	6¾	3	20¾	2¼	½
143T	8	22	13	6¾	3	20¾	2¼	½
145T	8	22	13½	6¾	3	20¾	2¼	½
182T	10	24	14 ⁵ / ₈	7⅞	4	22¾	2 ⁵ / ₈	¾
184T	10	24	15 ⁵ / ₈	7⅞	4	22¾	2 ⁵ / ₈	¾



A Crane Co. Company

PUMPS & SYSTEMS

Crane Pumps & Systems
 420 Third Street
 Piqua, Ohio 45356
 (937) 778-8947
 Fax (937) 773-7157
 www.cranepumps.com

Crane Pumps & Systems Canada
 83 West Drive
 Brampton, Ont. Canada L6T 2J6
 (905) 457-6223
 Fax (905) 457-2650



© 2012 Crane Pumps & Systems, Inc.
 A Crane Co. Company
 Printed in U.S.A.
 D3914BRO - Rev. B (5/14)



brands you trust.

BARNES

burks

DEMING

WEINMAN



PROSSER